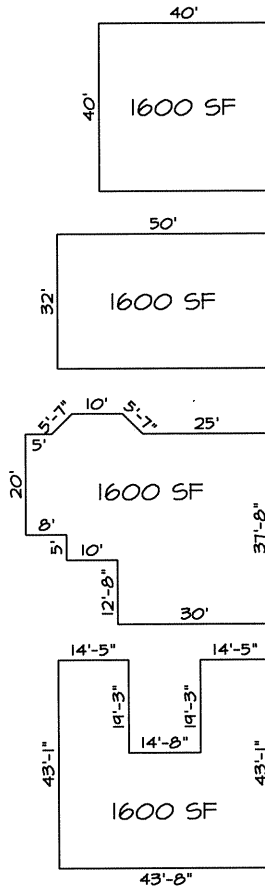


Why Cost Per Square Foot Varies?

EXAMPLE 1: LINEAR



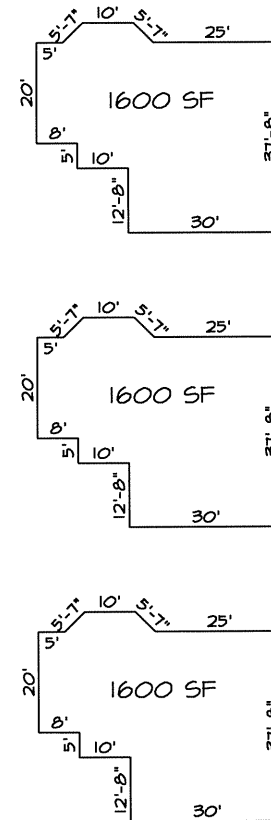
A
160 LINEAR FT

B
164 LINEAR FT

C
175 LINEAR FT

D
212 LINEAR FT

EXAMPLE 2: VOLUME



A
8' CEILINGS
12,800 CUBIC FT

B
10' CEILINGS
16,000 CUBIC FT

C
12' CEILINGS
19,200 CUBIC FT

Explanation:

All examples have the same square footage yet there is a 25% linear (perimeter/exterior) footage difference comparing A to D.

Explanation:

Higher ceilings create more volume of materials used. C has the same square footage as A but has 33% more volume than A.

Via Homes is here to
answers the tough questions.
Let us help.

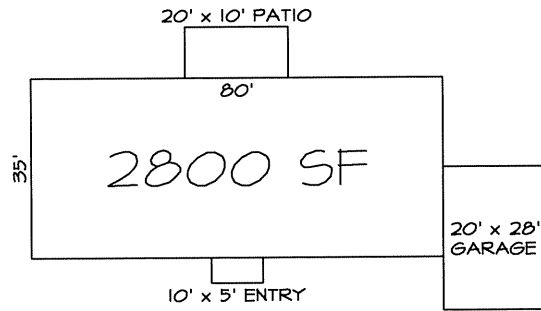


6903 E. Parkway Norte • Mesa, AZ 85212
PH: 480-830-2220 • FAX: 480-830-6660
www.viahomes.com • build4me@viahomes.com

▼ Scroll Down for more info ▼

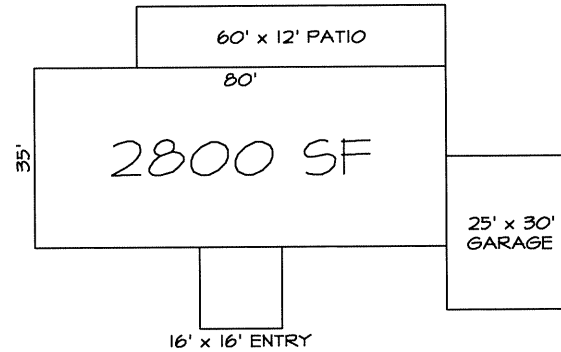
Why Cost Per Square Foot Varies?

EXAMPLE 3: UNDER ROOF



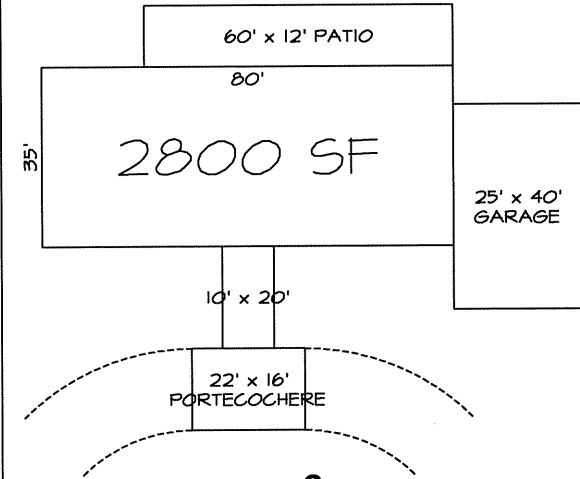
A

AREA DESCRIPTION	SF
LIVEABLE	2800
PATIO	200
3-CAR	560
ENTRY	50
UNDER ROOF SF	3610



B

AREA DESCRIPTION	SF
LIVEABLE	2800
PATIO	720
3-CAR	750
ENTRY	256
UNDER ROOF SF	4526



C

AREA DESCRIPTION	SF
LIVEABLE	2800
PATIO	720
3-CAR	1000
ENTRY	552
UNDER ROOF SF	5072

Explanation:

All examples have the same liveable square footage, yet C has 30% more under roof square footage.

Via Homes is here to
answers the tough questions.
Let us help.



6903 E. Parkway Norte • Mesa, AZ 85212
PH: 480-830-2220 • FAX: 480-830-6660
www.viahomes.com • build4me@viahomes.com